

To install Labview:

Labview is installed in two parts; Labview without FRC and an FRC update

1. Create an NI account

https://lumen.ni.com/nicif/us/header_create/content.xhtml?action=create&du=http%3A%2F%2Fwww.ni.com%2FmyNI%2Fdashboard%2F

- Use your student email
- Select “student” under role

2. Download LabVIEW 2016.zip and FRCUpdateSuite.2017.2.0.zip from Louise/Leo/Teresa/Isaac’s flash drive and unzip both files

3. Open the LabView folder and double-click on autorun.exe

4. Enter the admin password and follow all directions

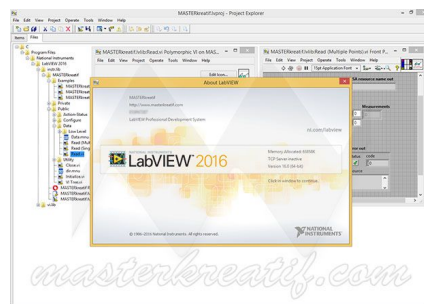
- For school computers you will need to do this in the media center at an arranged time

5. At some point you will need to enter your NI username and password

6. It will ask for a serial number (M82X12344) and maybe our team number (3792)

7. Once Labview (without FRC) is finished installing, restart your computer and open Labview

- It should look like this:



8. Repeat the above steps for the FRC update. Once it is installed, restart your computer and open Labview again.

- This time it should look like this:

